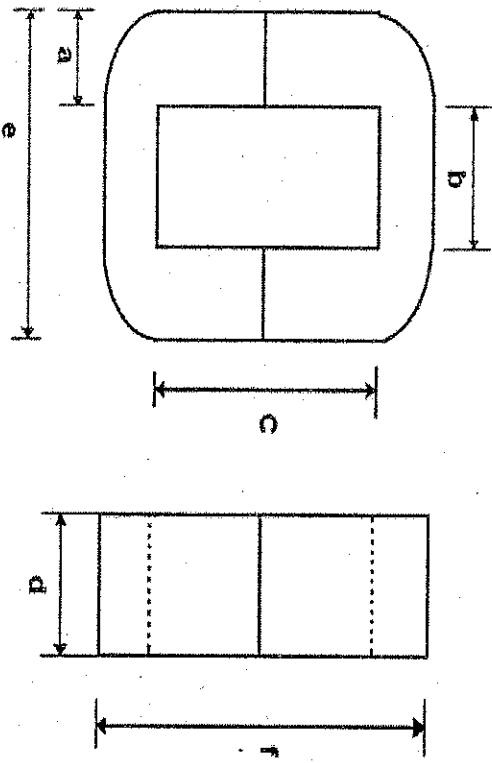


# USHA AMORPHOUS METALS LTD, INDIA (C-CORE DESIGN)

**MATERIAL:** Iron Based Amorphous Metal Alloy

**DIMENSIONS:**



Dimensions: mm  
 Scale: Not To Scale  
 Projection: Third Angle

**NOTE:** A. ALL MEASUREMENTS ARE DONE AT ROOM TEMPERATURE  
 B. WEIGHT INCLUDES 2% EPOXY WEIGHT  
 C. CONTINUOUS OPERATING TEMPERATURE 155 °C

NO.	REV NO.	DATE	ECON NO.	REVISIONS DETAILS	Checked	Approval

**NOTICE/DISCLAIMER:** THIS DRAWING, THE PROPERTY OF USHA AMORPHOUS METALS LTD., INDIA IS FURNISHED, SUBJECT TO RETURN ON DEMAND AND THE CONDITION THAT THE INFORMATION AND TECHNOLOGY EMBEDDED HEREIN SHALL NOT BE DISCLOSED OR USED AND THE DOCUMENT SHALL NOT BE REPRODUCED OR COPIED IN WHOLE OR IN PART EXCEPT AS PREVIOUSLY AUTHORISED IN WRITING; ANY PERSON RECEIVE OR OBSERVE THIS DOCUMENT WILL BE HELD STRICTLY LIABLE FOR ANY VIOLATION WHETHER OR NEGLIGENT.

**PHYSICAL SPECIFICATION:**

	(a) mm	(b) mm	(c) mm	(d) mm	(e) mm	(f) mm	(grams)
Core Build	11.00	±	0.80				
Window Width	13.50	±	0.50				
Window Length	51.00	±	1.00				
Core Height	30.00	±	0.50				
Core Width	35.50	±	2.10				
Core Length	73.00	±	2.00				
Core Weight	332	±	2.0 %				

**MAGNETIC CHARACTERISTICS:**

Mean Magnetic Path	(lm) cm	16.34
Net Cross Section Area	(Ac) cm <sup>2</sup>	2.77
Window Area	(Wa) cm <sup>2</sup>	6.89
Area Product	(Ap) cm <sup>4</sup>	19.09

**ELECTRICAL SPECIFICATION:**

Core Loss @ 16.00 KHz: 0.037 T ≤ 1.38 Watts/Kg

**SPECIAL INSTRUCTION:**

**Core Size: UMCCC 20**

**Verification:**

Prepared and Checked By: *[Signature]* Date: 13/09/2013  
 Feasibility Check and Approved By: *[Signature]* Date: 13/09/2013

**Customer Approval:**

Company: \_\_\_\_\_  
 Approver Name: \_\_\_\_\_  
 Signature: \_\_\_\_\_ Date: \_\_\_\_\_  
 STAMP

Enquiry No.: \_\_\_\_\_  
 Dated: \_\_\_\_\_  
 ED/10/C/ 43 Rev.: 00 Dated 13/07/2010